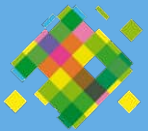




Stedenbouwkundig plan

Rietstraat en Zeebiesstraat e.o. Emmeloord

Stedenbouwkundig plan Rietstraat en Zeebiesstraat e.o. Emmeloord



gemeente
NOORDOOSTPOLDER

datum: 20-09-2023

HJK architecten

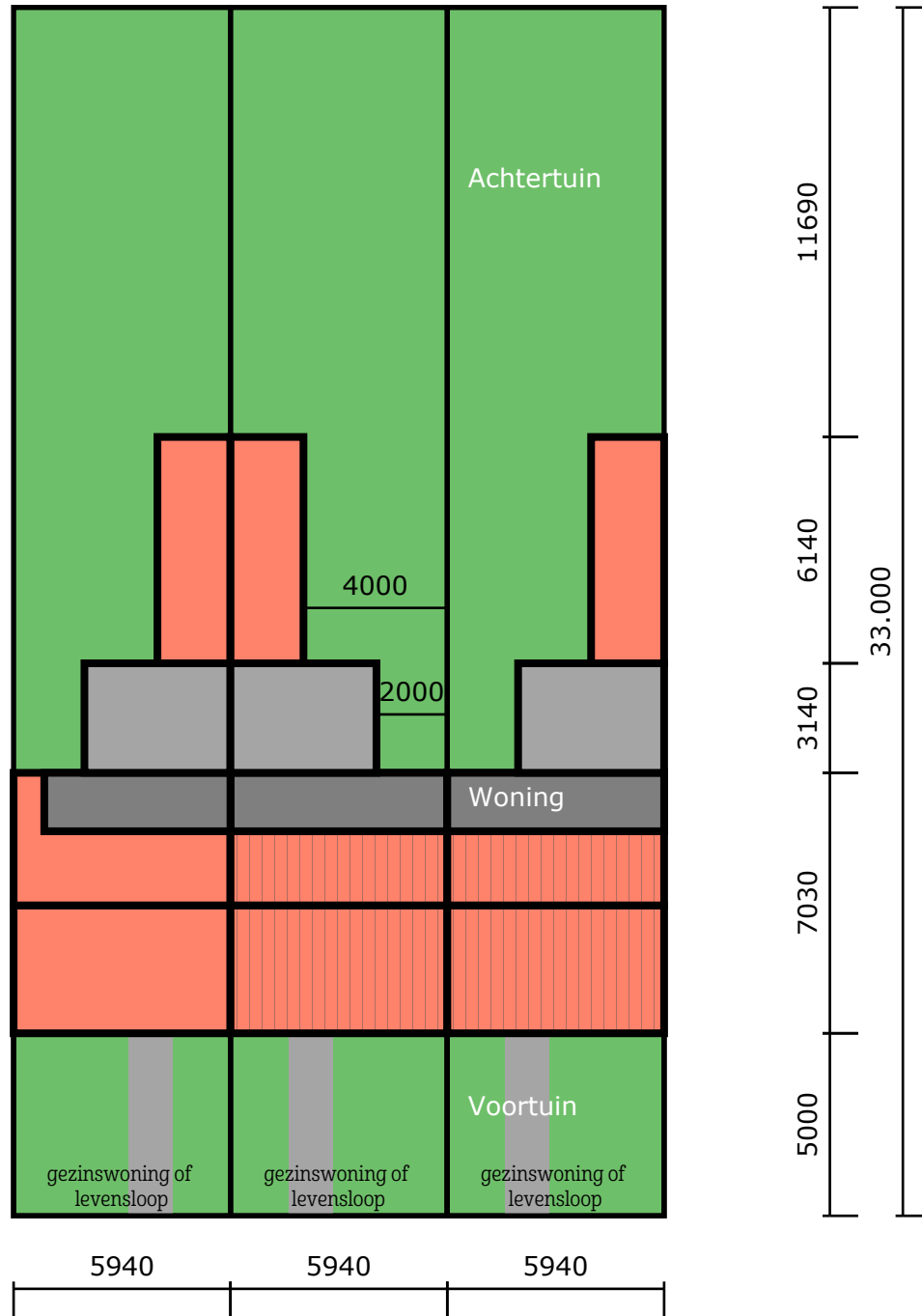


HKB stedenbouw & landschap



mercatus
wonen op z'n best

Kavel
bestaand

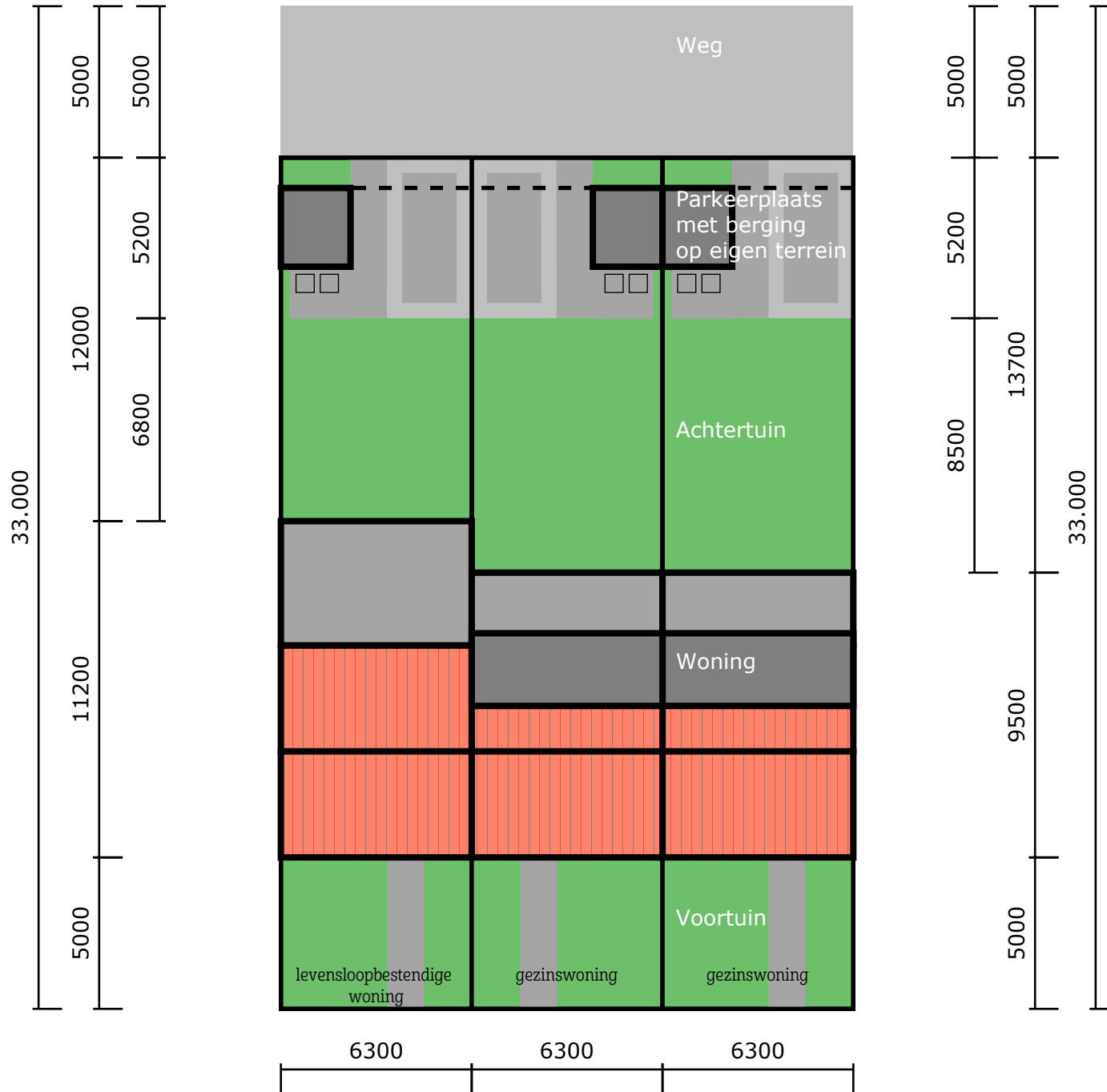


Schematische weergave bestaande kavel



Bestaande situatie met particuliere koopwoningen donker gearceerd

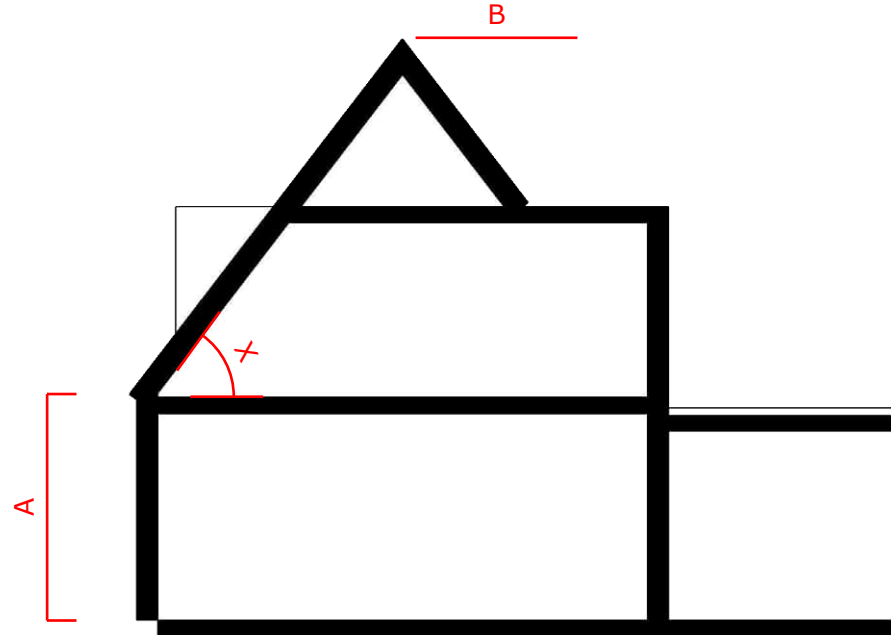
Kavel
nieuw



Schematische weergave kavel met parkeeroplossing

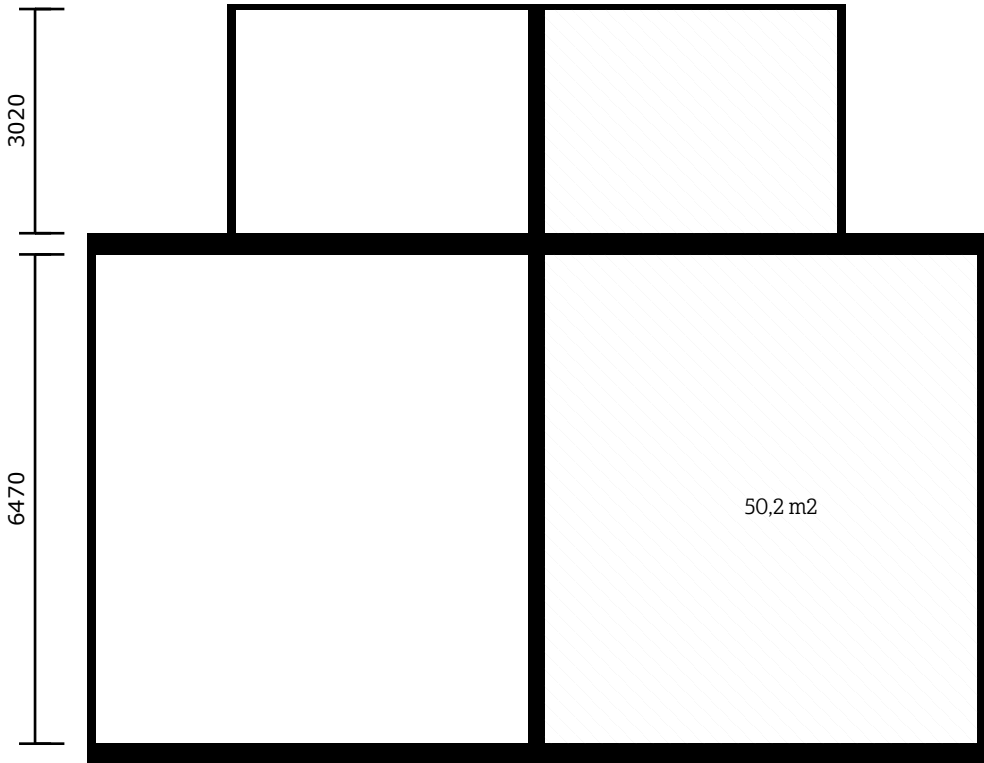


Woning
lage goot



bestaande doorsnede

3920

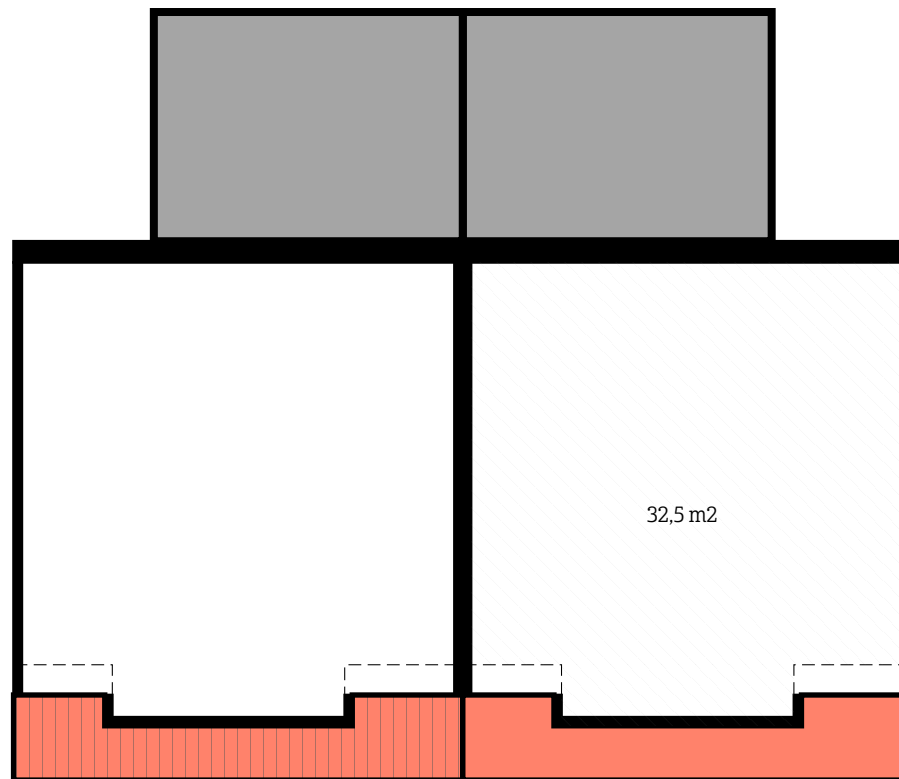


50,2 m²

5720

begane grond

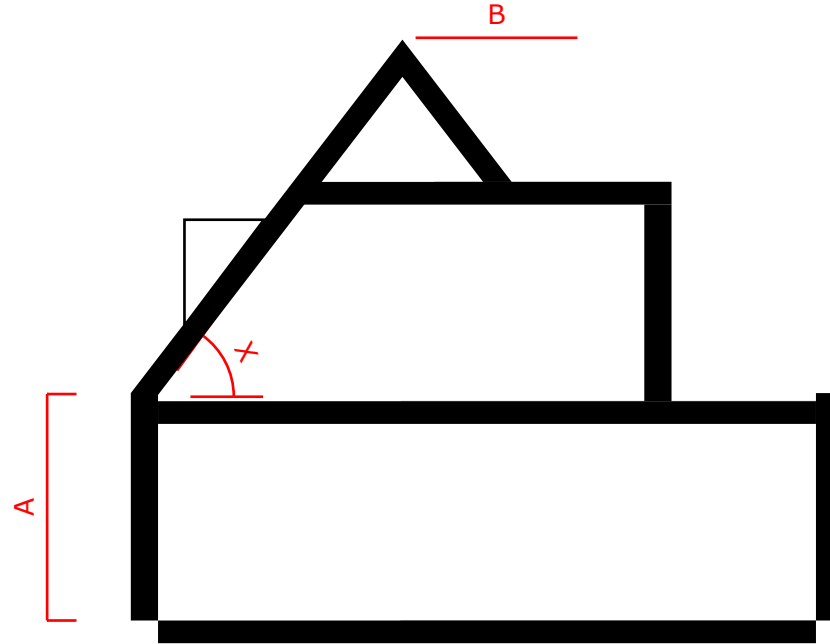
5940 h.o.h



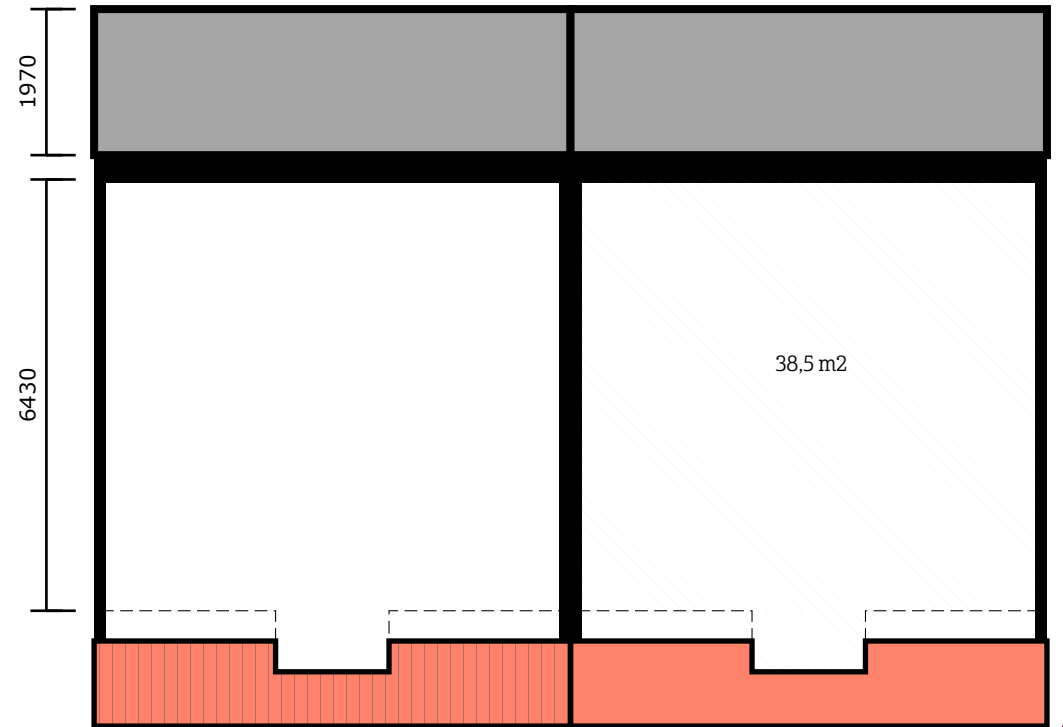
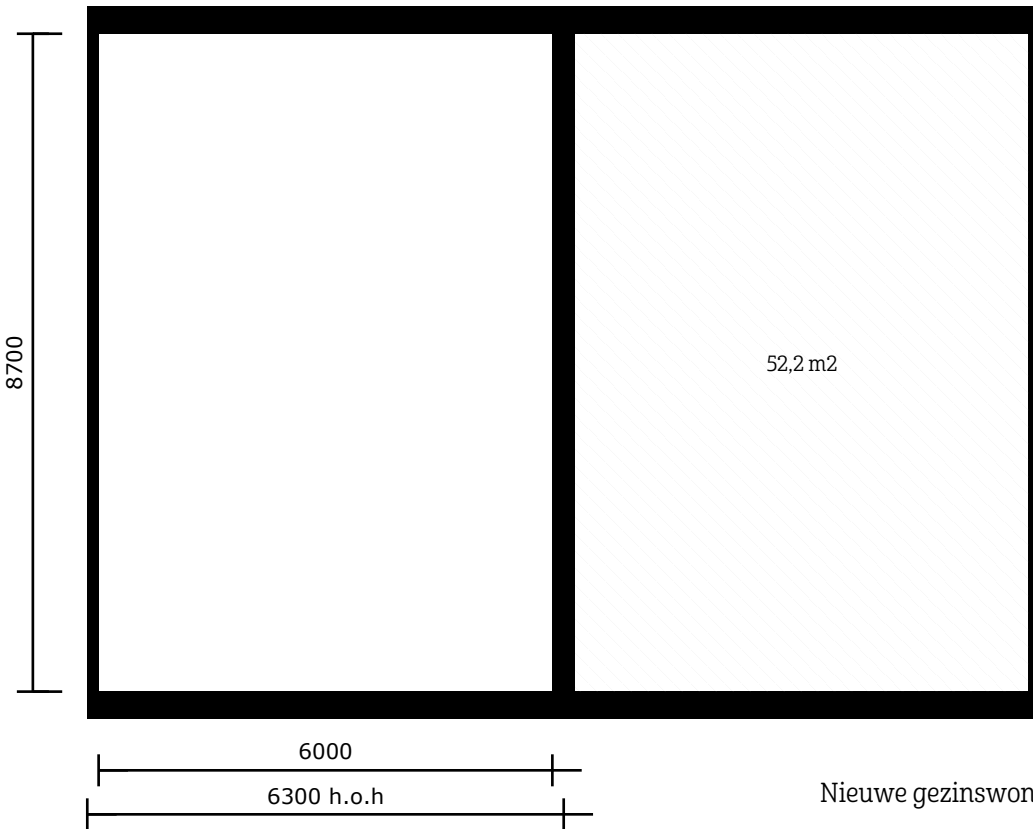
32,5 m²

verdieping

Bestaande gezinswoning Rietstraat oostzijde - lage goot

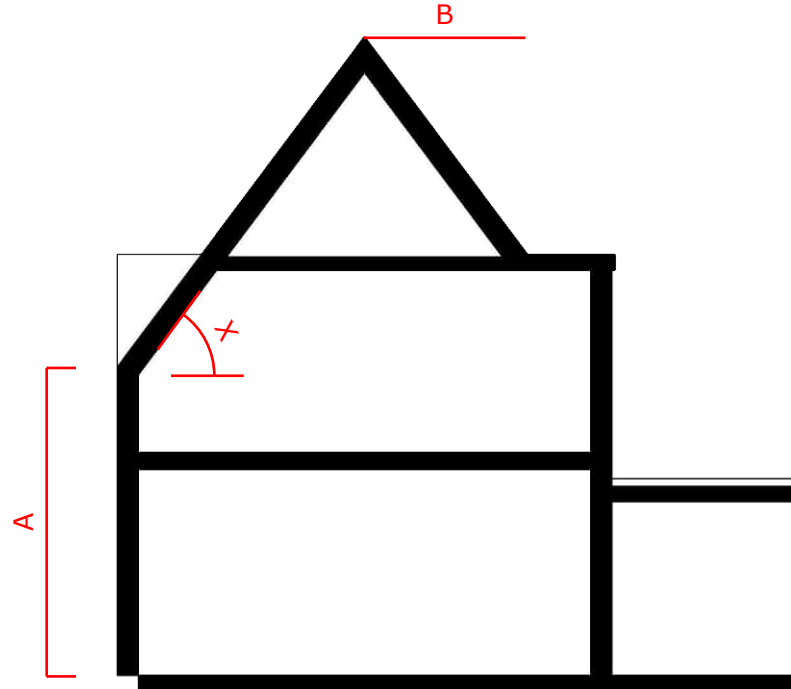


nieuwe doorsnede



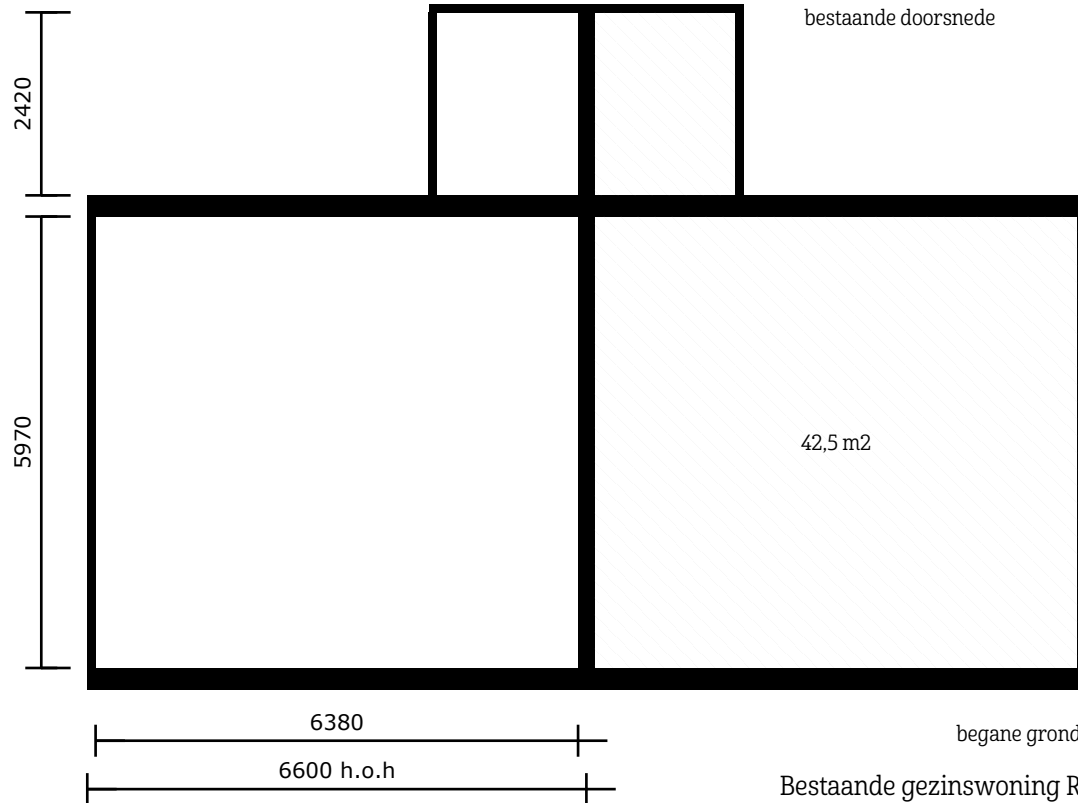
Nieuwe gezinswoning Rietstraat oostzijde - lage goot

Woning
hoge goot

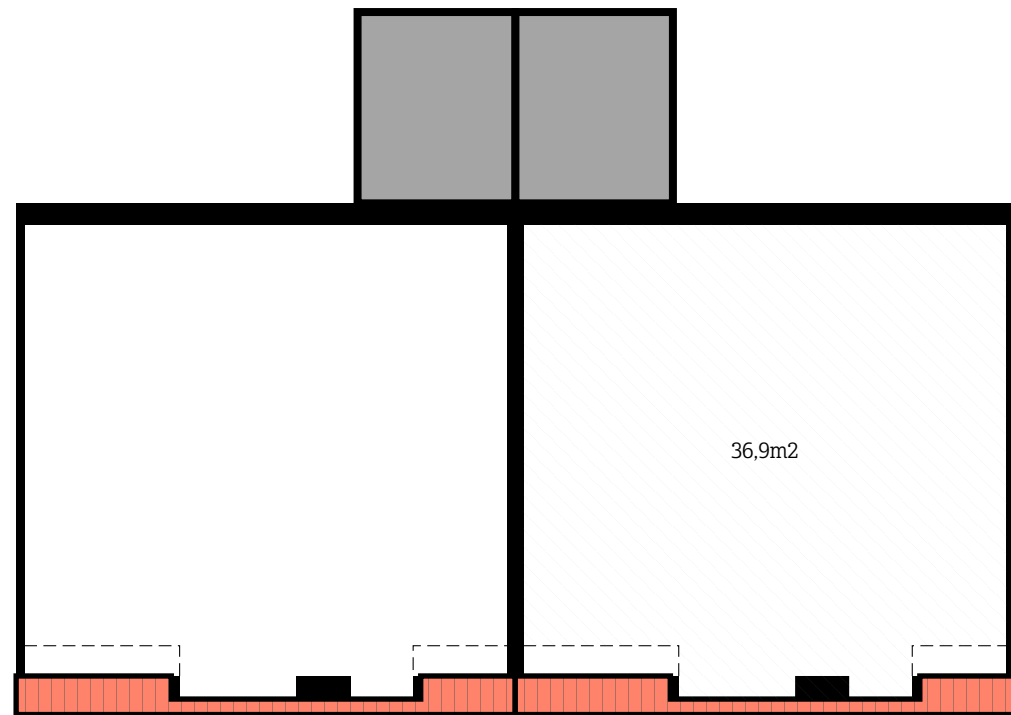


1865

bestaande doorsnede

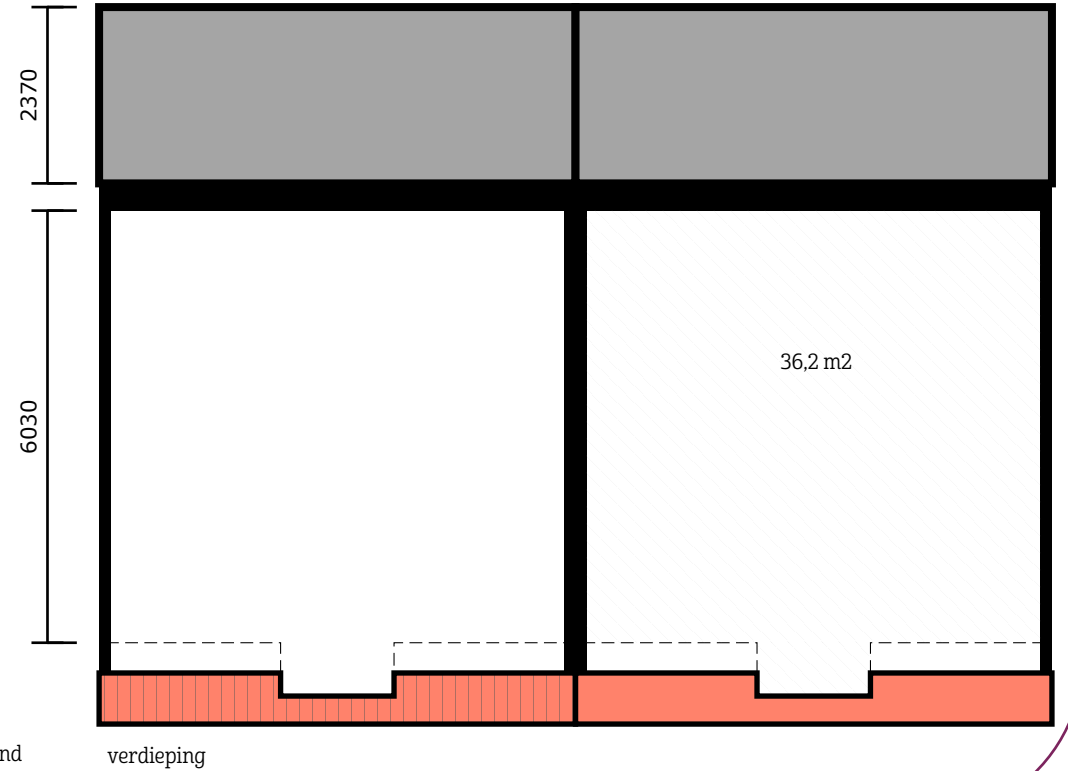
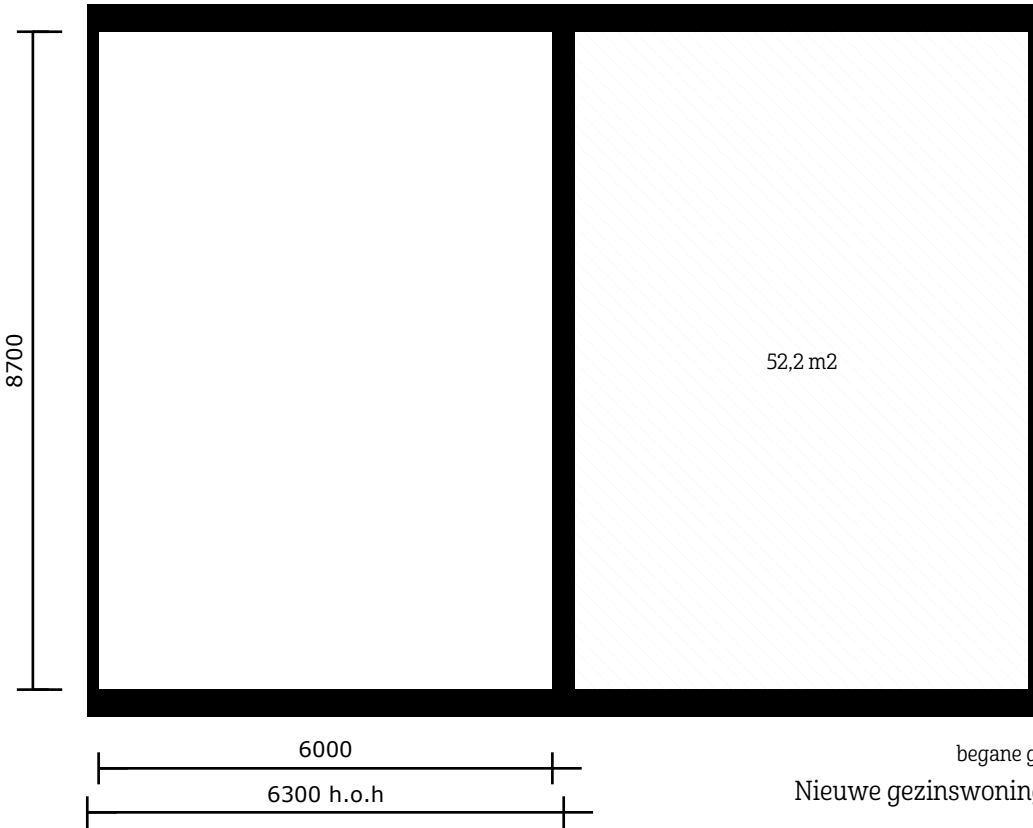
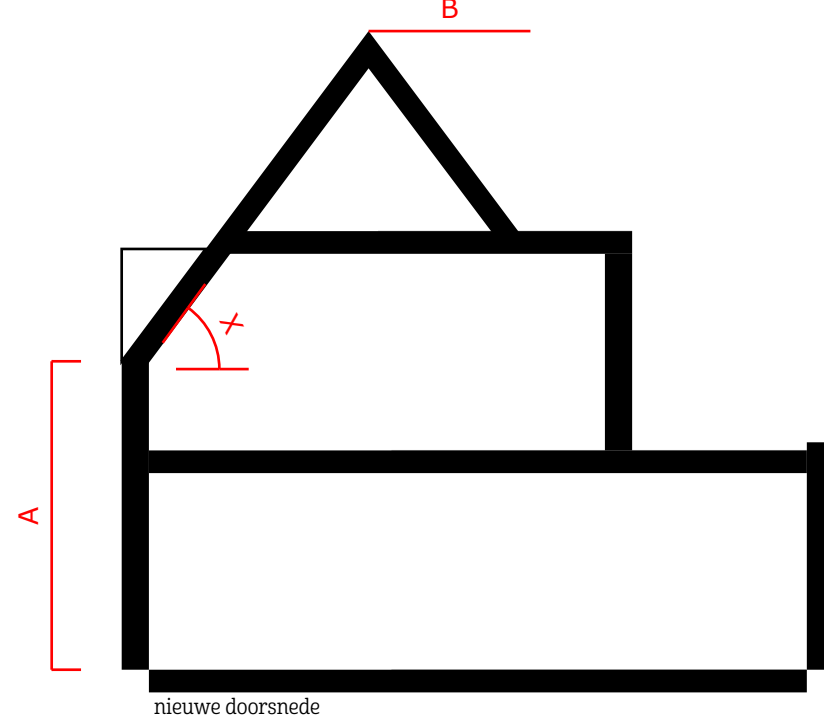


begane grond



verdieping

Bestaande gezinswoning Rietstraat westzijde - hoge goot



Nieuwe gezinswoning Rietstraat westzijde - hoge goot

